

**PLAT
FORM
ARTS**

**VENUE
HIRE
PACK
2024**



ABOUT

Thank you for considering Platform Arts as your next event venue.

Platform Arts is conveniently located in the heart of Geelong's CBD, nestled in the Cultural Precinct on Little Malop Street. Our venue is a 5 minute walk from Geelong Train Station and the bus interchange.

Within our unique setting of the former courthouse building and positioned as a leading arts venue in the region, Platform Arts boasts a diverse offering of spaces for external hire, including spaces for performance, rehearsal, presentation, meetings, workshops, conferences and symposiums.

We live and learn on the unceded lands of the Wadawurrung people of the Kulin Nations. For tens of thousands of years, Djilang has been home to the first makers, storytellers and knowledge holders.

Platform Arts acknowledges and celebrates ways of Being, Knowing and Doing that signifies the diversity of social experiences, cultural identities and subjective positions of First Nations people.

We pay our respects to First Peoples past, present and becoming, and we are privileged to share the process of art making and culture building together.

*Always was, always will be,
Aboriginal land.*



CONTENTS

PERFORMANCE SPACE	2
FLOOR PLAN	3 + 4
SEATING MAP	5
TECH SPECS	6
DRESSING ROOMS	7
REHEARSAL SPACE	8
FLOOR PLAN	9
PRICING	10
ADDITIONAL INFORMATION	11
TICKETING	
ACCESSIBILITY	
COMPANION CARD	
CARER SUPPORT	
GETTING HERE	
VALUES	12
CONTACT	13

PERFORMANCE SPACE

WITH ITS GENEROUS SIZE, MULTI-FORM ADAPTABILITY AND RETRACTABLE SEATING BANK, OUR PERFORMANCE SPACE IS SUITABLE FOR PRESENTATIONS, REHEARSALS, PERFORMANCES (THEATRE, DANCE, MUSIC AND MORE), SCREENINGS, CONFERENCES AND SYMPOSIUMS.

Ascending the terrazzo stairs to meet the golden hue of the yellow paned window features, our Performance Space foyer doubles as our vibrant Gallery Two space, offering audiences a pre-show experience.

With high ceilings and art deco features, quality theatrical audio and lighting, our Performance Space has everything you need to execute a standout event.

A kitchenette is located adjacent to the Rehearsal Space and includes sink, kettle, bar fridge and microwave. The kitchenette is stocked with standard tea and coffee supplies. Any additional cleaning required for the kitchenette will be charged as an on-cost to the hirer.

All hires of the Performance Space require the additional hire of a designated Front of House and Technical Assistant staff member.

DIMENSIONS:	15.1m x 10.45m
SEATED CAPACITY:	128 people
ADDITIONAL ROW:	140 people
STANDING CAPACITY:	200 people

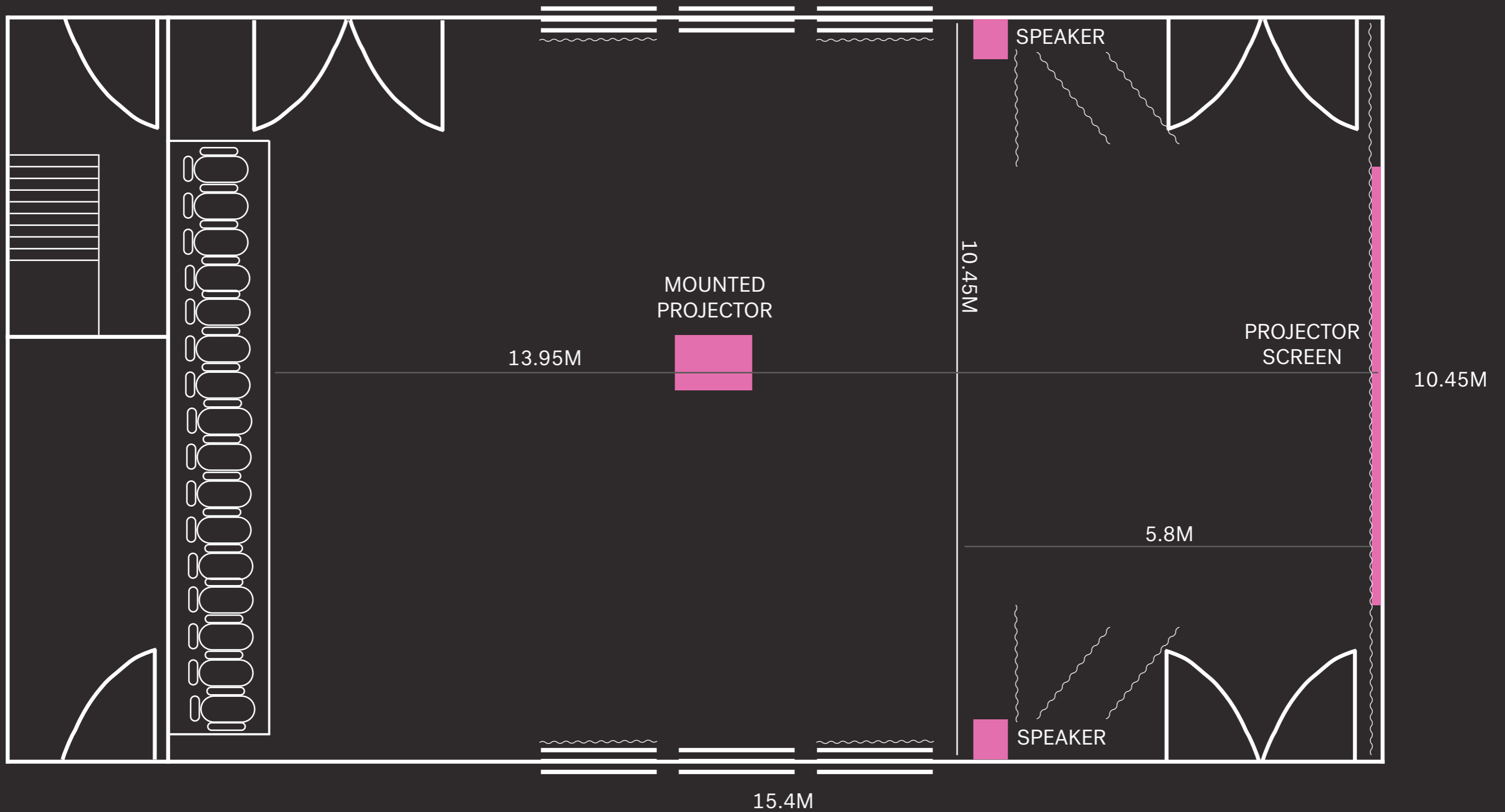
FEATURES

- HIGH CEILINGS AND ART DECO FEATURES
- RETRACTED, RAKED SEATING BANK
- TARKETT STAGE FLOORING
- FLEXIBLE SEATING AND STAGE
- THEATRICAL AUDIO AND LIGHTING CAPABILITIES
- MOUNTED DATA PROJECTOR AND SCREEN
- BOH LEFT AND RIGHT STAGE ENTRANCE POINTS
- TWO BOH DRESSING ROOMS
- ACCESSIBLE TOILET/SHOWER
- GOODS AND SERVICE LIFT FOR STREET LEVEL TRANSPORTATION OF EQUIPMENT
- BABY GRAND PIANO AVAILABLE FOR HIRE
- WHEELCHAIR ACCESSIBLE
- TICKETING PACKAGES AVAILABLE (SEE PAGE 9)



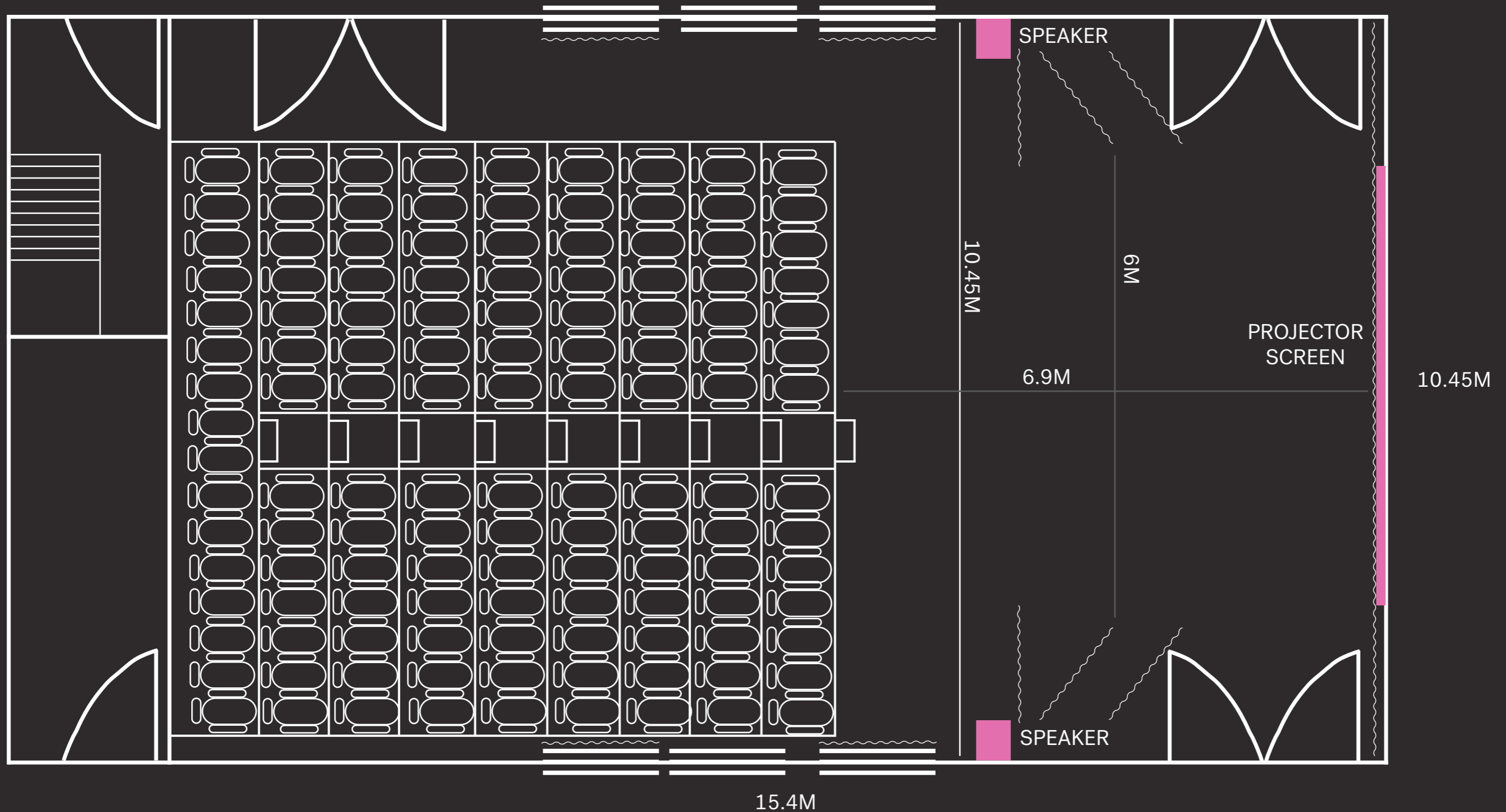
FLOOR PLAN

PERFORMANCE SPACE



FLOOR PLAN

PERFORMANCE SPACE



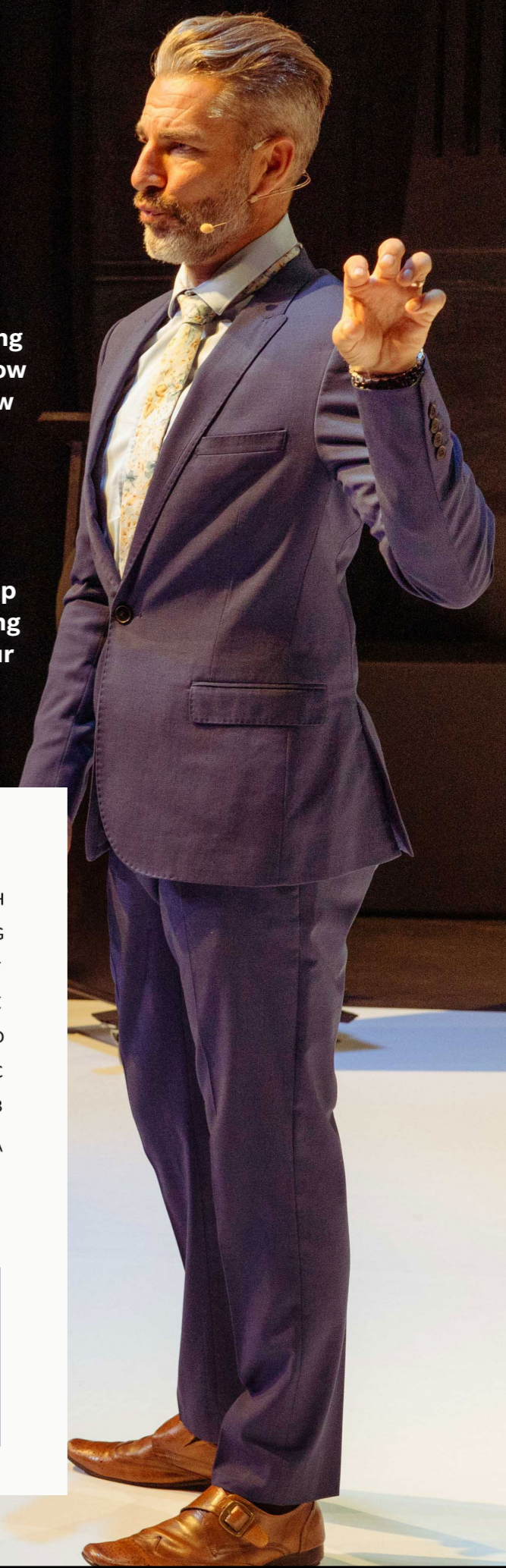
SEATING MAP



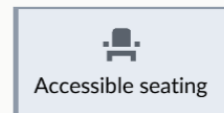
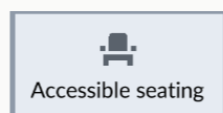
PERFORMANCE SPACE

Our Performance Space retractable stepped seating bank accommodates **128** persons. An additional row of chairs can be added in front at floor level to allow accessible seating and increase seated capacity to **140** persons. The seating bank has aisle lights for access and lettered and numbers rows, visible on the aisle stairs.

Platform Arts can provide a copy of the seating map for ticketing, or if Platform is managing the ticketing and you would like allocated seating, please ask our Venue Manager (see page 9).



I	1	2	3	4	5	6	7	8	9	10	11	12	13	14	15	16	I
H	1	2	3	4	5	6	7	H	H	8	9	10	11	12	13	14	H
G	1	2	3	4	5	6	7	G	G	8	9	10	11	12	13	14	G
F	1	2	3	4	5	6	7	F	F	8	9	10	11	12	13	14	F
E	1	2	3	4	5	6	7	E	E	8	9	10	11	12	13	14	E
D	1	2	3	4	5	6	7	D	D	8	9	10	11	12	13	14	D
C	1	2	3	4	5	6	7	C	C	8	9	10	11	12	13	14	C
B	1	2	3	4	5	6	7	B	B	8	9	10	11	12	13	14	B
A	1	2	3	4	5	6	7	A	A	8	9	10	11	12	13	14	A



TECH SPECS

FULL VENUE TECHNICAL SPECIFICATIONS INCLUDING THE PERFORMANCE SPACE ARE AVAILABLE VIA OUR WEBSITE. FLOOR PLANS CAN BE VIEWED ON PAGES 3 AND 4.

THIS IS PLATFORM ARTS STANDARD HOUSE SETUP. ADDITIONAL EQUIPMENT CAN BE FOUND IN EQUIPMENT HIRE ON PAGE 9.

DIMENSIONS

STAGE DEPTH

US wall to FOH curtain | 4.5m
US wall to Seating (extended) | 6.9m
US wall to Seating (retracted) | 14m

STAGE WIDTH

Wall to Wall | 10.45m
Between static hung legs | 6M

STAGE HEIGHT

Stage to ceiling | 7.5m
Stage to LX bars | 6m

ACCESS

The loading dock is accessed via our Gheringhap Street laneway. Trucks are able to reverse to the goods and service lift, which is accessed via a dock leveller. See venue technical specifications for further information (available via our website).

ELEVATED WORK PLATFORM

Dingli MVP080-E push-around vertical lift with outriggers. Outriggers must be used at all times.
Platform height | 8m
Working height | 10m

PROJECTOR

1 X Epsom EB-L735U Laser Projector (up stage wall of the Performances Space is painted white to accommodate projection).

LIGHTING

PRIMARY LIGHTING CONSOLE
Chamsys Quick Q 20

SECONDARY LIGHTING CONSOLES
DMX King UltraDMX 2PRO

DIMMERS
5 x LSC Redback Dimmers
4 x Jands FP12 Dimmers

FIXTURES
6 x Selecon Pacific 12° - 28° 1Kw Profiles
5 x Selecon Acclaim 18° - 34° 600x Profiles
5 x Selecon Compact 7° - 50° 1Kw Fresnels w/ barn doors
11 x Kupro Multipar 575w Parcans
1 x FAL Spark 575 Followspot
2 x Floodlights (house lights during performances)
6 x Event Lighting PAR12x12 RGBWAU Pro PAR
2 X Chauvet Intimidator Spot 355 irc

AUDIO

SOUND CONSOLE
Allen & Heath Qu16 Digital Mixing Console

SECONDARY MIXERS
Soundcraft UI21r 24 Channel Digital Mixer/USB Multitrack Recorder
Soundcraft EPM8 8 Channel Mic/Line Mixer

AMPLIFIERS
Crown Xli 3500 power Amplifier
2 x FOH Turbosound TCX-15 Speakers (installed at 5.5m)
2 x JBL 18" MP418SP FOH Subwoofers (installed at floor level)

FOLDBACK/ADDITIONAL FOH SPEAKERS
5 x Mackie Thump SRM450's powered speakers
2 x JBL EON15 G2 powered speakers
1 x Yamaha DXS15 MkII Drum fill Subwoofer
3 x speaker stands (free standing)

MICROPHONES
6 x Shure SM58 (Vocal)
4 x Shure SM57 (Instrument)
1 X Shure Beta52a (Instrument)
6 x Shure PG58 (Vocal)
1 X Sennheiser e914 (Instrument)
3 X Sennheiser e904 (Instrument)
1 x TOA WT-5810 (Lapel)
1 x Shure PG58 UHF (Vocal)
1 x Sennheiser EW100 G3 (Vocal)
1 x JTS GM-5212 (Lectern)

ACCESSORIES
35 X XLR/DMX Cables
20 X K&M Mic Stands
4 X Behringer DI's

DRESSING ROOMS



AN INCLUSION TO THE HIRE OF THE PERFORMANCE SPACE, PLATFORM ARTS BOASTS TWO DRESSING ROOMS. WITH ONE GENEROUS LARGER DRESSING ROOM AND A SMALLER 8-PERSON DRESSING ROOM, THESE SPACES DOUBLE AS GREEN ROOMS FOR MUSIC PERFORMANCES.

Located at back of house with direct access to stage right, each dressing room is equipped with light mirrors, a built in hair/makeup bench, furniture, clothes racks with coathangers, an iron and ironing board, casting call speakers, and stage screen monitors, to provide performers with a haven to prepare.

An all-access toilet with shower is located outside of the dressing rooms for performer use.

FEATURES

- LIGHT MIRRORS
- HAIR/MAKEUP BENCH
- IRON + IRONING BOARD
- CLOTHING RACKS + COATHANGERS
- CASTING CALL SPEAKERS
- RELAY SCREEN MONITORS (VISUAL + AUDIO)
- BAR FRIDGE
- SEATING AREA + MAKEUP CHAIRS
- CHARGING STATION
- ACCESSIBLE TOILET/SHOWER
- WHEELCHAIR ACCESSIBLE
- SPLIT SYSTEM HEATING/COOLING

REHEARSAL SPACE



OUR REHEARSAL SPACE IS SUITABLE FOR REHEARSALS, WORKSHOPS, MOVEMENT/ DANCE CLASSES AND CORPORATE EVENTS.

For major performances within a Performance Space hire, the Rehearsal Space can also double as an additional dressing room, warm-up space, costume or set design storage space, or a stand-alone performance space. The high ceilings, art deco features, abundant natural light and parquet flooring makes the Rehearsal Space a stunning setting.

A kitchenette is located adjacent to the Rehearsal Space and includes sink, kettle, bar fridge and microwave. The kitchenette is stocked with standard tea and coffee supplies. Any additional cleaning required for the kitchenette will be charged as an on-cost to the hirer.

Limited audio and lighting facilities are available upon request. Please discuss your technical and seating requirements with Platform Arts.

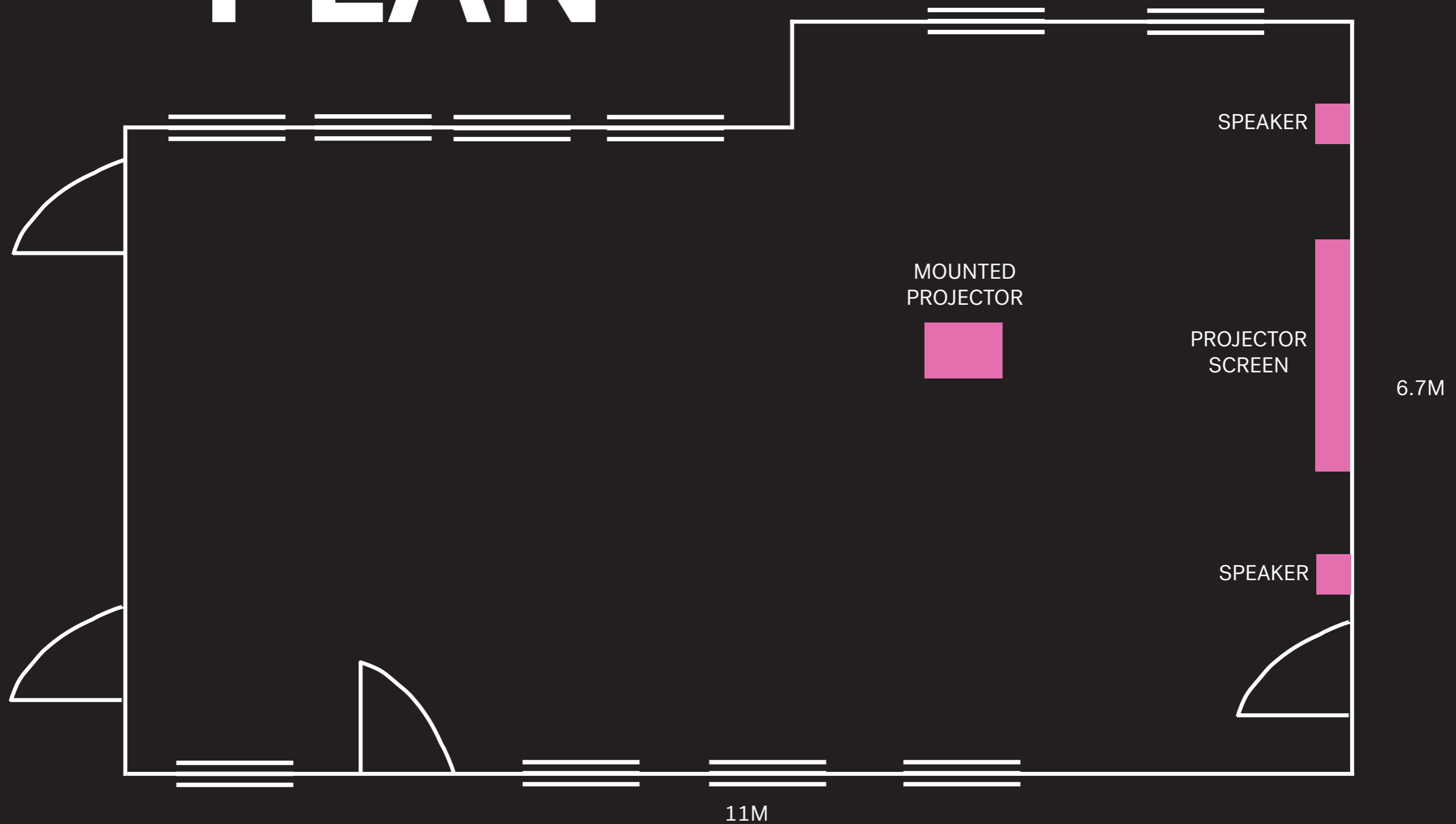
DIMENSIONS:	11m X 6.7m
SEATED CAPACITY:	Up to 40 people (configuration dependent)
STANDING CAPACITY:	Up to 60 people

FEATURES

- CEILING-MOUNTED DATA PROJECTOR
- WALL-MOUNTED SPEAKERS
- WHITEBOARD
- CLIMATE CONTROL
- ACCESS TO GENDER NEUTRAL TOILETS
- TABLES AND CHAIRS
- KITCHENETTE
- WI-FI
- DANCE MIRRORS
- UPRIGHT PIANO

FLOOR PLAN

REHEARSAL SPACE



PRICING

	FULL DAY	3 DAY	WEEKLY (7 DAY)
PERFORMANCE SPACE (INCLUDES DRESSING ROOMS AND BOH)	\$950	\$2300	\$5300
REHEARSAL SPACE	\$500	\$1200	\$2800
PACKAGE ONE PERFORMANCE SPACE + REHEARSAL SPACE (INCLUDES DRESSING ROOMS AND BOH)	\$1200	\$3000	\$6800

All prices are EX GST.

PLEASE NOTE:

- Bookings incur a cleaning fee of \$175
- Bookings for the Performance Space, and general public events held in the Rehearsal Space, incur additional tech support and/or Front of House rates.
- After hours bookings for the Performance Space and Rehearsal Space incur additional tech support rates.

TECH SUPPORT RATES

MON - SAT: \$50 p/h
SUN + PUBLIC HOLIDAYS: \$65 p/h

For all large production bookings requiring extensive technical duties, two technical support staff are required.

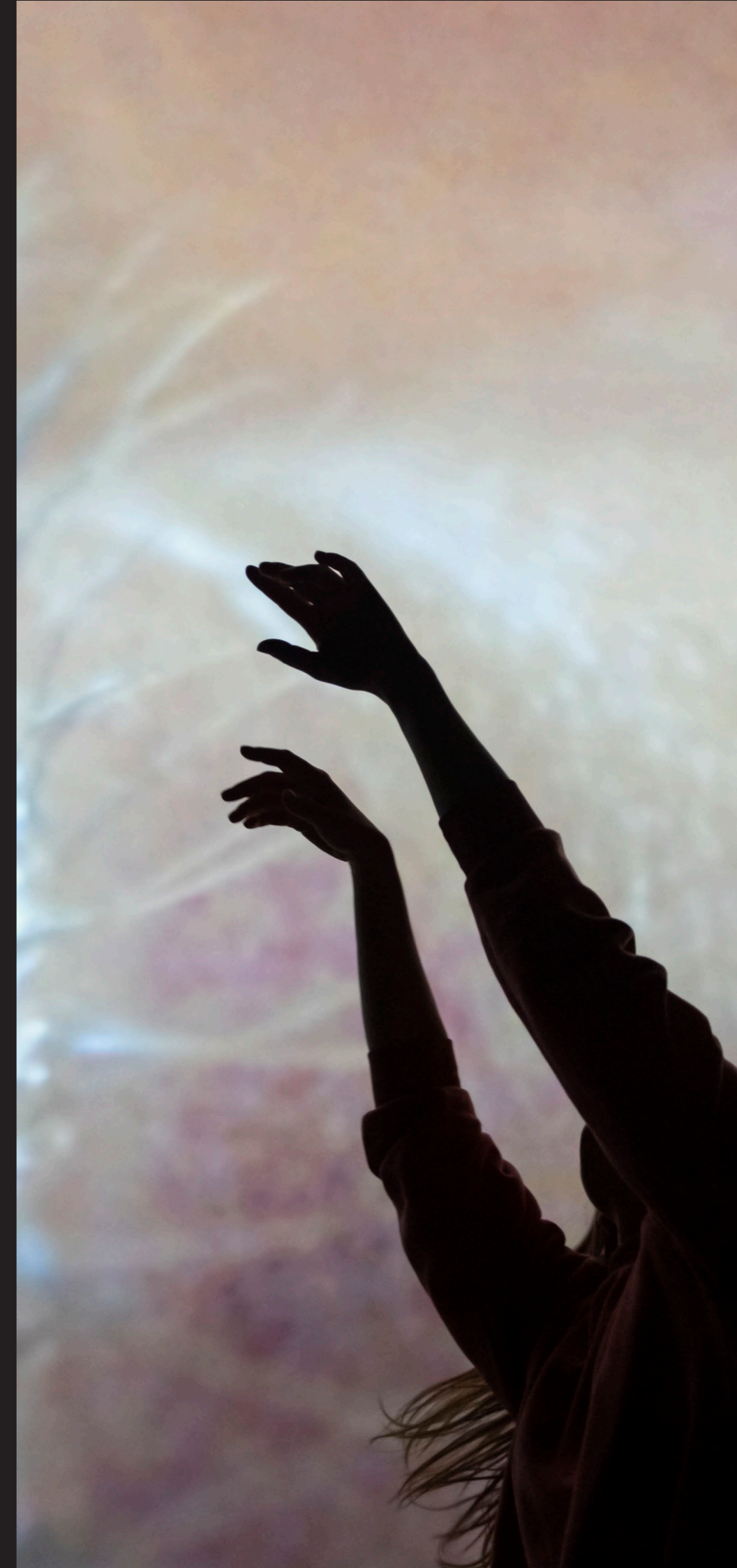
FOH SUPPORT RATES

MON - SAT: \$40 p/h
SUN + PULIC HOLIDAYS: \$55 p/h

A staff member is required to be onsite for the entirety of your booking, as well as one hour either side of the booking time.

EQUIPMENT HIRE

BABY GRAND PIANO	\$120
RAISED STAGE PLATFORMS 1220mm X 2400mm UNITS (4 AVAILABLE) (with adjustable legs 200-400mm, 450-600mm heights) (includes tri-treads/single treads and black velcro cover skirting)	\$50 PER STAGE



GENERAL INFORMATION

TICKETING

Platform Arts has an in-house ticketing system through not-for-profit provider, Humanitix. For the set-up and management of Box Office sales, Platform Arts take a percentage of the overall Box Office takings. Booking fees are included on top of the ticket purchase price and donated through Humanitix to their nominated charity. For all ticketed events that require Platform Front of House staff to conduct ticketing, the hirer must use our ticketing provider. Please indicate if you would like allocated seating for audience.

ACCESSIBILITY

Platform Arts is committed to quality access to arts activities from everyone. The venue is fully wheelchair accessible, with two disabled parking spaces just outside the Little Malop Street Entrance, a wheelchair ramp located at the Gheringhap Street entrance, and wheelchair accessible bathroom and lift. Guide and assistance dogs are welcome at Platform Arts. Accessibility options are listed during ticket purchase for audience convenience. Please contact hello@platformarts.org.au to discuss any accessibility needs.

COMPANION & CARER SUPPORT

Companion card holders can obtain free access to Platform Arts paid programs and events. We accept companion cards registered in Victoria and interstate.

GETTING HERE

TRAIN

Geelong Station is the closest stop to our venue. It is a 5 minute walk up Fenwick Street, turn left at Little Malop Street and we are located on the next corner. Alternatively, take a beautiful stroll through Johnstone Park toward Geelong Library & Heritage Centre dome. We are located across the road on the corner of Gheringhap and Little Malop Street. Access to the building is via either Little Malop Street or Gheringhap Street entrances.

BUS

Geelong has an extensive bus network with most terminating at the Geelong Station. These include bus routes 19, 20, 22, 24, 25, 30, 32, 40, 41, 42, 43, 50, 51, 55, 56, 60, and 61. Please see PTV for further information.

BIKE

Bike racks are located directly out the front of Platform Arts on Gheringhap Street shaped in the form of the word 'ARTS'. Gheringhap Street also boasts new bike lanes for travelling ease.

CAR

Metered street parking is located throughout Central Geelong. A commercial car park, Inter Carpark, is located diagonally to the Platform Arts location. Additional commercial parking is located in close walking distance to the venue.

BAR SERVICES

Platform Arts Front of House staff can provide bar services for public events. Please indicate if you would like alcoholic beverages served at least 2 months in advance as Platform Arts must apply for temporary liquor licences in advance.

VALUES



LEADERSHIP

We are leaders in creative risk and experimentation, supporting artists to challenge conventions and develop bold works that deliver exceptional audience experiences. We strive to expand our community and strengthen the culture of our city through connection with individuals and organisations. We nourish a strong collective of staff, artists and peers that informs our programs and outcomes, promoting leadership through capable, connected and visionary artists and arts workers.

ADVOCACY

We are respectful, tolerant and inclusive. We make space, support and create opportunities for diverse voices, and for those who might not otherwise have access to creative pathways. We advocate for and with artists and arts workers. We provide a platform for professional growth and practice, encourage and enable all Platform Arts participants to contribute to the region's arts and culture offer.

ACCOUNTABILITY

We are a highly accountable and ethical organisation with best practice governance. We value transparency, loyalty and impartiality in everything we do. Our board represents leaders from diverse professional backgrounds, who support staff in building a strong organisation that prioritises sustainability and wellbeing in working conditions for staff, artists and our community.

CONTACT



**PLAT
FORM
ARTS**

PLATFORM ARTS

60 Little Malop Street Geelong
(Cnr Gheringhap & Lt Malop St)

P (03) 5224 2815

hello@platformarts.org.au

platformarts.org.au

[instagram.com/platformartsgeelong](https://www.instagram.com/platformartsgeelong)